

# Newsletter

**POHUTUKAWA KINDERGARTEN ELLERSLIE**

## Term 3 2025

Matilda joined her big sister Petra and Otto joined his brother Freddie here last term. Its so lovely to see the tamariki looking after these younger ones and supporting them to make friends.

### CHILD PROTECTION

#### Keeping Our Tamariki Safe – Child Protection Policy Review

It's time for our annual review of our Child Protection Policy. With recent headlines in Australia highlighting the importance of child safety, this is a timely reminder of how seriously we take our responsibility to protect and nurture our tamariki.

In today's rapidly changing world, it's natural to feel concerned about how to keep our youngest citizens safe. At kindy, we want our children to grow up brave, confident, and curious—ready to explore, take risks, and learn through play. At the same time, we are committed to creating a safe and supportive environment where upsets, conflicts, and disappointments are treated as learning opportunities that help build resilience and personal growth.

#### Our Most Powerful Tool: Education

All our teachers undertake regular professional development in child protection—attending training at least every two years. This includes identifying and responding to all forms of suspected abuse: physical, emotional, neglect, and sexual. These courses also reinforce how we maintain safe practices and environments that protect both tamariki and staff.

We are proud to be one of the few centres offering the *All About Me* programme. Developed in the late 2000s by police and education professionals, this empowering resource introduces important topics in a developmentally appropriate way. It helps children understand that they are unique and valued, teaches them the names of body parts and emotions, and opens conversations around the difference between secrets and surprises. It also introduces the concept of consent by teaching the importance of saying—and hearing—“No.”

#### Your Voice Matters

A copy of our updated Child Protection Policy will be emailed to all families in the coming weeks, with hard copies available at kindy. We welcome and value your feedback, and encourage you to share your thoughts.

Together, we can continue to create a kindy community where every child feels safe, respected, and loved.



#### INSIDE THIS ISSUE

|                           |   |
|---------------------------|---|
| Internal Evaluation ..... | 2 |
| Mahi Wha Club .....       | 2 |
| Staff News .....          | 3 |
| Group Planning.....       | 3 |
| Important dates .....     | 4 |
| Family Boost .....        | 4 |



*“Internal evaluation is a systematic process used to evaluate what is and is not working, and for whom, and then to develop our practices and make improvements as a result of evaluation” p15 Ngā Aronga Whai Hua*

## INTERNAL EVALUATION

### How well do we use the art of music in our local curriculum to support tamariki in their learning ?

Thank you to the few that have returned our music survey. We are currently complying the results. If you still have this at home or need a new copy please grab one from the sign in desk. I will also email the survey out in case its easier for you to fill in on line and send back that way.

We have had some interesting responses and look forward to tapping into the experience of the families we have here at kindy with both instruments and singing!



## Individual Planning

We are very excited to be in our first round of individual planning with each child. We will support these learner goals by designing the environment for engaging learning experiences and using a range of intentional teaching strategies. As progress is observed we will record this in the children's kete ako and revise as required.

Please add your voice to these stories either directly in the kete ako or through conversations or messages to the teachers.

## MAHI WHA CLUB

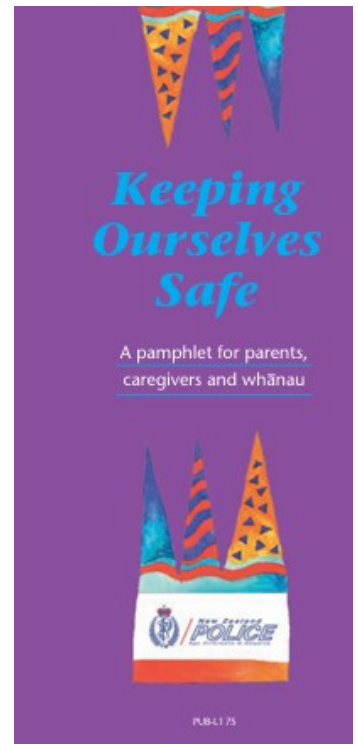
Membership in this club is at peak numbers with so many of the children reaching the milestone of turning 4 this year.

We are spending the beginning of this term completing our exploration of the phonic sound and letter formation for the rest of the alphabet (s-z).

We will then move on to our all About me programme. This is a fantastic resource that we were part of many years ago until it was removed due to funding. We still believe that it is a great programme with valuable learning for all tamariki.

We will be covering a variety of topics over 6 weeks and will share information each week as it is introduced to the children.

We hope to have the education police officer come to our information evening which we will hold on the 31st July, 7-8 pm at kindy. All parents welcome.



## STAFF NEWS

Annie will be with us till the end of term as she is coping with pregnancy like a pro.

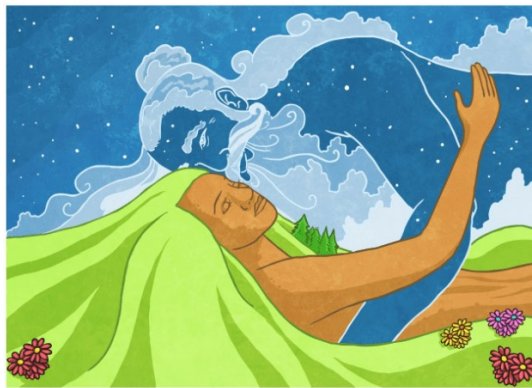
We are still looking for the perfect teacher to join our team while Annie has that special first year at home with her baby boy. In the mean time I will be spending more time at Ellerslie supporting Annie and the team at this time.



## GROUP PLANNING

Following on from our recent Matariki celebrations and the creation of our waka, we are excited to continue our journey into te ao Māori — the Māori world. Over the coming weeks, we will be exploring traditional pūrākau (legends) and learning about various atua (Māori gods and spiritual guardians). We will spend time discussing the values mentioned in our philosophy. We'll also be engaging with waiata (songs) and deepening our understanding of te reo Māori through new vocabulary and everyday use.

As always, we welcome the knowledge, ideas, and contributions of our whānau. If you or any extended family members have cultural insights, skills, or stories you would like to share with our tamariki, we would be honoured to have your support as we enrich our learning together.



## SMART WORDS

We have seen such great growth and development with the tamariki's knowledge and development of their phonic awareness as well as letter formation over the past term. We are continuing to build these resources and repeat the songs and visual connections for all the children in the kindy environment. Watching the children smile with pride as they master writing their name never gets old to a teacher.



## TE WHARIKI -TE ARA WHANUI : OUR CURRICULUM

### PATHWAYS TO SCHOOL

Learning is a journey that begins before birth and continues throughout life. Each part of the education system has a responsibility for supporting children (and the adults they become) on this lifelong journey of exploration. Kaiako and new entrants teachers support children by affirming their identity and culture, connecting with and building on their funds of knowledge and having positive expectations for their learning. Young children look forward to going on to school or kura, and they expect it to be different, but they do not always anticipate quite how different the expectations, structures and routines may be. By working together, kaiako, new entrants teachers, parents and whānau can support children's learning continuity as they make this crucial transition.

***Pohutukawa Kindergarten is committed to supporting children transition to school by ensuring they have the skills, knowledge and confidence to succeed.***

## PJ DAY

Melanie's favourite day of the year when we can all come to kindy in our PJs.

Dressing gowns, slippers and a teddy bear welcome!

## WACKY WEDNESDAY/ TOPSY TURVEY

Based on the iconic book Wacky Wednesday we love having a funny dress-up day where everything at kindy is a little bit crazy!!!

Join the fun by coming dressed in a crazy outfit, or putting everything on backwards, or adding some interesting accessories.

So much fun!

## REVIEWS AND TESTIMONIALS

We are still looking for some new testimonials and google reviews. If you have the time please click on the link on the bottom of my

### POHUTUKAWA KINDERGARTEN ELLERSLIE

!6 Arthur Street  
Ellerslie  
Auckland

Phone: 09 579 5008

Mobile 021 088 49711

E-mail: [office@pohutukawa.net.nz](mailto:office@pohutukawa.net.nz)

## IMPORTANT DATES

- PJ day – 30th and 31st July—All day
- Individual and Class photos—28th August (9am sharp)
- Wacky Wednesday—3rd September—All Day
- Topsy Turvey Thursday—4th September—All day
- Mums Night—11th September—7pm
- Celebrating Annie—We will have a special final Mat-time for Annie on Friday 19th September—2pm

## REMINDERS

With winter upon us it's important your child has enough spare clothing and a wet bag for any wet items (there is always plenty of water and messy play at kindy). Please name things as much as possible and we will do our best to return it.

With building and site preparation beginning next door, we ask that you **take extra care in the carpark and footpath** area. There is a lot of congestion with commuters parking, cones and large vehicles entering next door.



## FAMILY BOOST

The Family Boost payment is **increasing**. It is made directly to families with young children to help with the rising costs of early childhood education (ECE). The Family Boost payment will now be equal to 40% of ECE fees paid by households, maximum of \$1560 every 3 months, to families with a household income of less than \$229,100 a year, effective 1st July 2025.

If you think you might be eligible then apply on line at the IRD. Please ask Melanie if you need me to resend any invoices as you can also claim for previous time periods.

With our new Student Management System, each time there is an enrolment change you will need to sign the piece of paper acknowledging the change. This will also be true for extra days booked in advance.